



KRAFTCON
CIVIL ENGINEERS & CONTRACTORS



Your Construction Partner

**Committed To
Excellence**

From Two Friends to Three Generations

KRAFTCON

Late Founder

Ch. Hameed
Asghar

Late Founder

Syed Masood
M. Gillani

Committed to Excellence

At Kraftcon, we're not just constructing buildings; we're crafting legacies of robust and long-lasting infrastructure. Within over six decades of work, we've developed close relationships with our clients and excellence in industrial, commercial, and residential construction.

Since





Humble Beginnings to Till Date **Over**

Years of Success

A history built on excellence, top-notch performance, unmatched professionalism, timely delivery, rock-solid foundation, high-speed construction services, happy clients, and whatnot.

KRAFTCON
CIVIL ENGINEERS & CONTRACTORS



Industrial
Construction



Commercial
Projects



Warehousing
Projects

Auxiliary
Buildings



W
h
a
t

W
h
a
t

W
h
a
t

W
h
a
t

W
h
a
t

Proud To Serve

Pakistan's Prestigious Groups



KRAFTCON
CIVIL ENGINEERS & CONTRACTORS

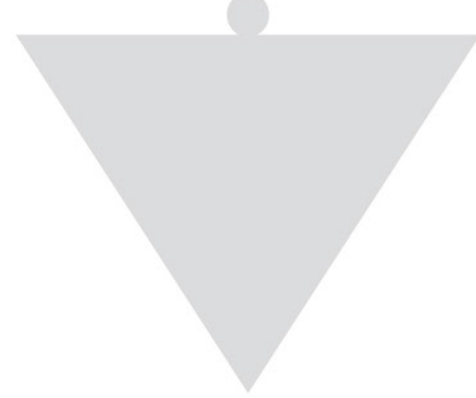


KRAFTCON
CIVIL ENGINEERS & CONTRACTORS



Your
Construction
Partner.

KRAFTCON
CIVIL ENGINEERS & CONTRACTORS



Kraftcon Team

Committed to fulfilling the present world's needs while ensuring long-term results, we've a team of **300+ trained craftsmen.**



Board of Directors

**Ch. Rasheed
Ahmad**

Chief Executive
*B.Sc. Mechanical Engineer
(1978)*

**Ch. Rauf
Ahmad**

Director
*B.Sc. Civil Engineer
(1982)*

**Ch. Farooq
Ahmad**

Director
MBA, (1985)

**Salman
Rasheed**

Director
*B.Sc. Civil & M.Sc. Construction
Management (UK) (2007)*

**Muhammad
Ali Rauf**

Director
*B.Sc. Civil, & PGd. Structures
(UK) (2008), Executive MBA
(Lums) (2025)*

**Muhammad
Omer Farooq**

Director
B.S. Civil Tech (2010)

A Long-Standing Dedication

1968

Started
Construction
Business as

Hameed Masood Pvt Ltd

1976

Rock
Phosphate
Plant at

Pak Arab Fertilizer Ltd.

1979

Atomic Energy
Commission

1982
Construction
of Textile Mills

1987
National Hockey
Stadium, Lahore

1989
Construction of
Livestock Plant
(Nestle, Milk pack)



Your
Construction
Partner.

KRAFTCON
CIVIL ENGINEERS & CONTRACTORS

A large, stylized orange number '1000' is positioned vertically on the right side of the page. The '1' is a simple vertical bar with a short horizontal top bar. The '0's are thick, rounded, and have a slight curve at the bottom. The '0's are connected to the '1' at the top and bottom.

Legacy Evolved
2nd Gen Achievements

2000

First Prestressed
Building In Pakistan
(Stm-6)

2003

Multan Cricket
Stadium

2006

Longest Prestressed
Building Span Indus
Home Ltd.

2009

First Wastewater
Treatment Plant

2010

Hatchery & Breeder
Form Asia Poultry
Feeds (Pvt) Ltd.

2012

Silos / Feed Mill
Asia Poultry Feeds
(Pvt) Ltd.

2015

Multi-Fuel Energy
And Steam Plant
(Sfml)

2016

Food Processing
Unit Asia Poultry
Feeds (Pvt) Ltd.

2017

Pakistan's Biggest
Platinum Leed
Certified Unit Style
Textile (Pvt) Limited

2018

Pharmaceutical
Unit

2021

Pakistan's First Glass
Fused Waste Water
Treatment Plant

2022

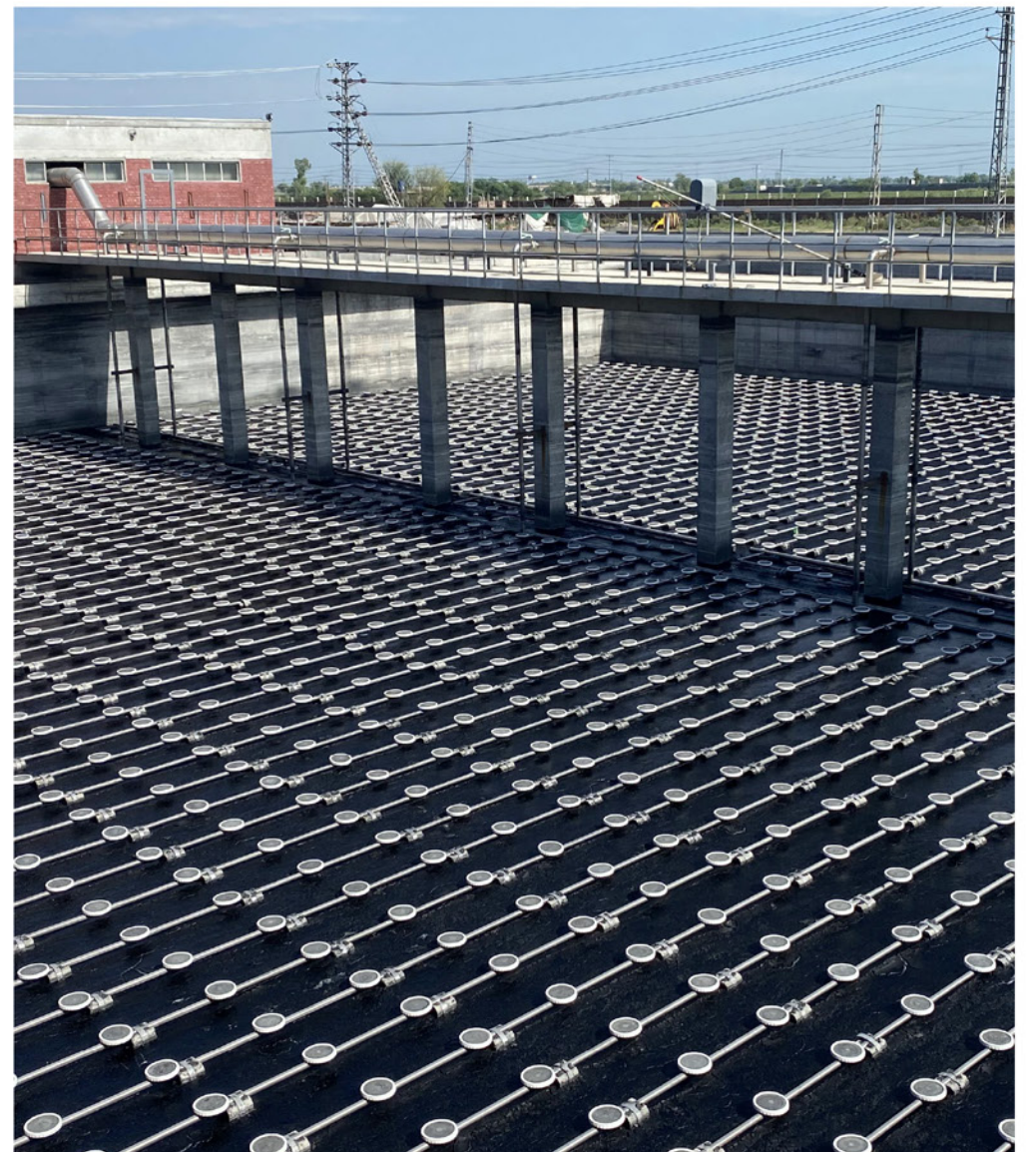
Longest Prestressed
Building Span Indus
Home Ltd.

Growth Continues



One of the
Largest Vertically
Integrated Textile
Units in Pakistan
Style Textile (Pvt) Limited

Sapphire Finishing
Mills Limited



Longest Prestressed
Building Span Indus
Home Ltd.



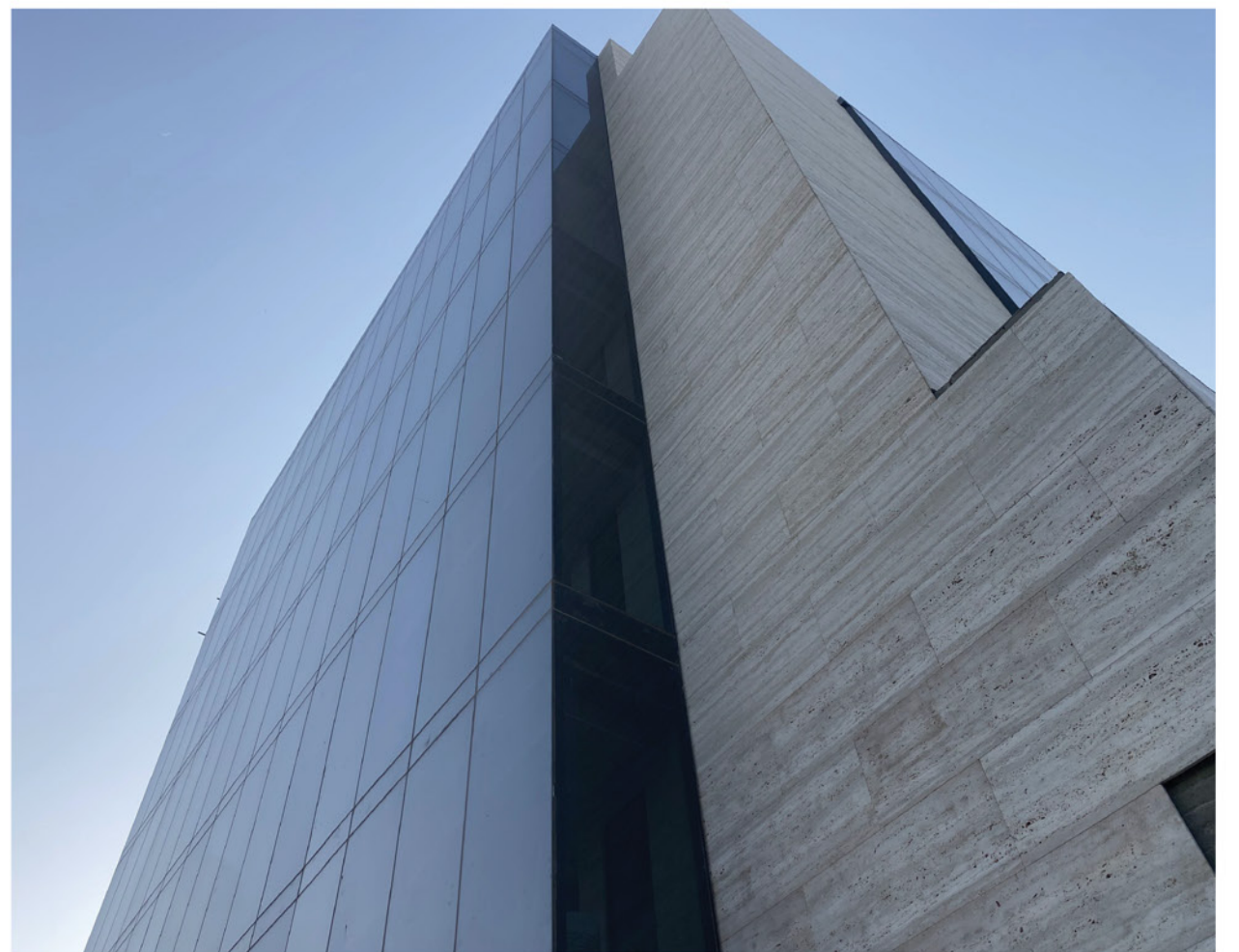
Terry Unit for
Indus Group



LEED Certified
Garments Units
for Sapphire Finishing Mills Ltd.



Multi-Storey
Office Building
for Masood Roomi Group



Concrete Silos
Construction
for Asia Poultry Feeds (Pvt) Ltd.



Growth Continues



Diamond Denim for
Diamond Fabrics



Spinning &
Weaving Units
for Sapphire Group



Spinning Units
Mahmood Group

Spinning Unit

Dewan Farooq & many more



Multan Cricket Stadium

Pakistan Cricket Board

MG Apparel

2nd Highest Scored (87)

Leed Certified Textile Unit in Pakistan



Auxiliary Buildings
(Power House, Treatment Plants, Boilers etc.)

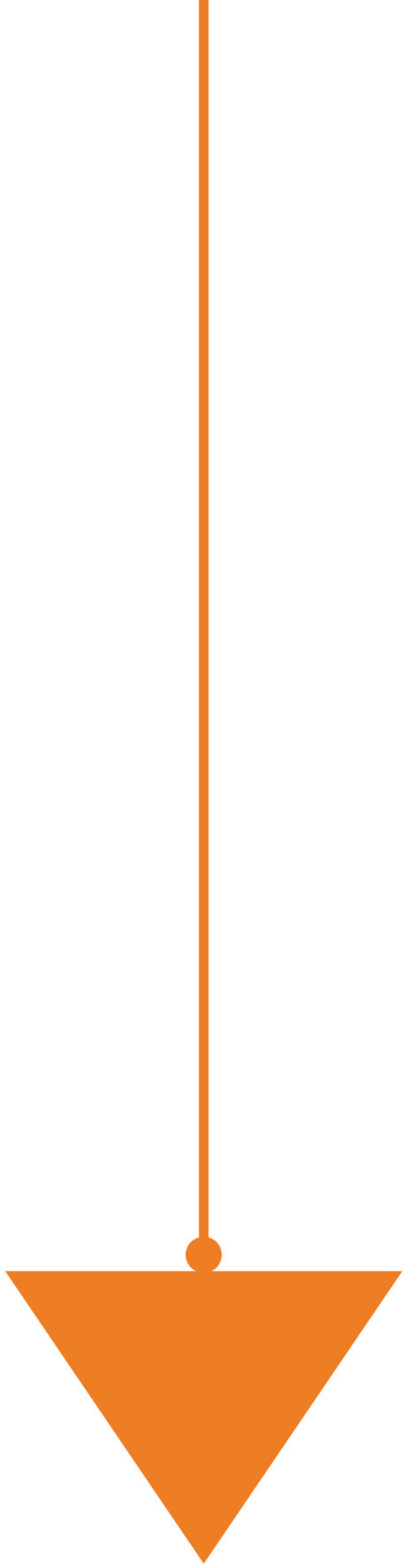
Associated with Main Projects



Committed
To
Excellence

Core Values Trust, Integrity, Quality & Mutual Respect





How We Do It

- Expert Management
- Quality Assurance
- Professional Engineers
- Dedicated Quality Control Experts
- Cutting-edge Technology
- Field Supervision



Why Choose Kraftcon

Proven Track Record	On-Time, On-Budget Delivery
Six Decades of Excellence	Comprehensive Services
Commitment to Sustainability	Transparent Communication
Client-Centric Approach	Building Relationships

Initial Date of Registration in PEC: Jan 25, 2016



Scan QR code to view details.



Serial No. 575475
PEC-11

PAKISTAN ENGINEERING COUNCIL
Licence No: **46** Category: **CB** Validity: **30 June, 2026**
LICENCE OF PAKISTANI CONSTRUCTOR/OPERATOR
(Under the bye-laws of Pakistan Engineering Council 1987)


The firm will bid individually and not in competition with **PREMIER BUILDERS & PLANNERS (C6/68047)** for the same project.

This is to certify that M/s **KRAFTCON (PVT) LIMITED** (Licencee), with its registered office at **101 MUZAMMIL TOWN 19 KM OFF, MULTAN ROAD LAHORE** have been licenced under Construction and Operation of Engineering Works Bye-laws 1987, until the validity date to construct/operate engineering works, the construction/capital cost of which does not exceed Rs. **4000 (FOUR THOUSAND)** million provided the licencee fulfils all the qualification requirements prescribed by Client or Employer for a particular engineering work; and subject to the licencee continuing to fulfill all the requirements of the bye-laws.

Field of Specialization **BC01 - BC02 - CE01 - CE04 (Irrigation Only) - CE08 - CE09 - CE10 - EE01 - EE02 - EE03 - EE04 - EE06 - EE07 - EE08 - EE10 - EE11 (Solar) - ME07 (General Textile works only) - (SEVENTEEN ONLY)** (Specialization Code Nos. for detail see overleaf)

Date of Issue: **May 27, 2024**
(Islamabad)




Registrar
Pakistan Engineering Council,
Islamabad.

Note:

1. If a firm does not get renewal of its licence within a year after expiry of its licence, the firm may be renewed after payment of outstanding fee if entire defaulting period plus surcharge at the rate of 5% of defaulting fee amount, or as prescribed from time to time.
2. The employer must ensure employment of engineers whose names are mentioned on backside of the licence. The Consulting Engineer (the Engineer Incharge in case the consultant is not appointed) shall monitor the number of engineers employed by the Constructor/Operator and inform the Council accordingly.
3. Owner(s) of the firm shall be held responsible, if any information, document or paper submitted by him/them is found incorrect or forged.

3
3
9
3
4
3



Committed
To
Excellence

Pakistan's Biggest
LEED Certified Building
for Style Textile (Pvt) Limited

KRAFTCON
CIVIL ENGINEERS & CONTRACTORS

Your Construction Partner.

Stand Strong with Kraftcon

101 - Muzammil Town, 19 KM,
Multan Road, Lahore, Pakistan

042 - 35971581 - 82
024 - 37514211 - 37512011

kraftcon@gmail.com
info@kraftcon.com.pk



KRAFTCON
CIVIL ENGINEERS & CONTRACTORS